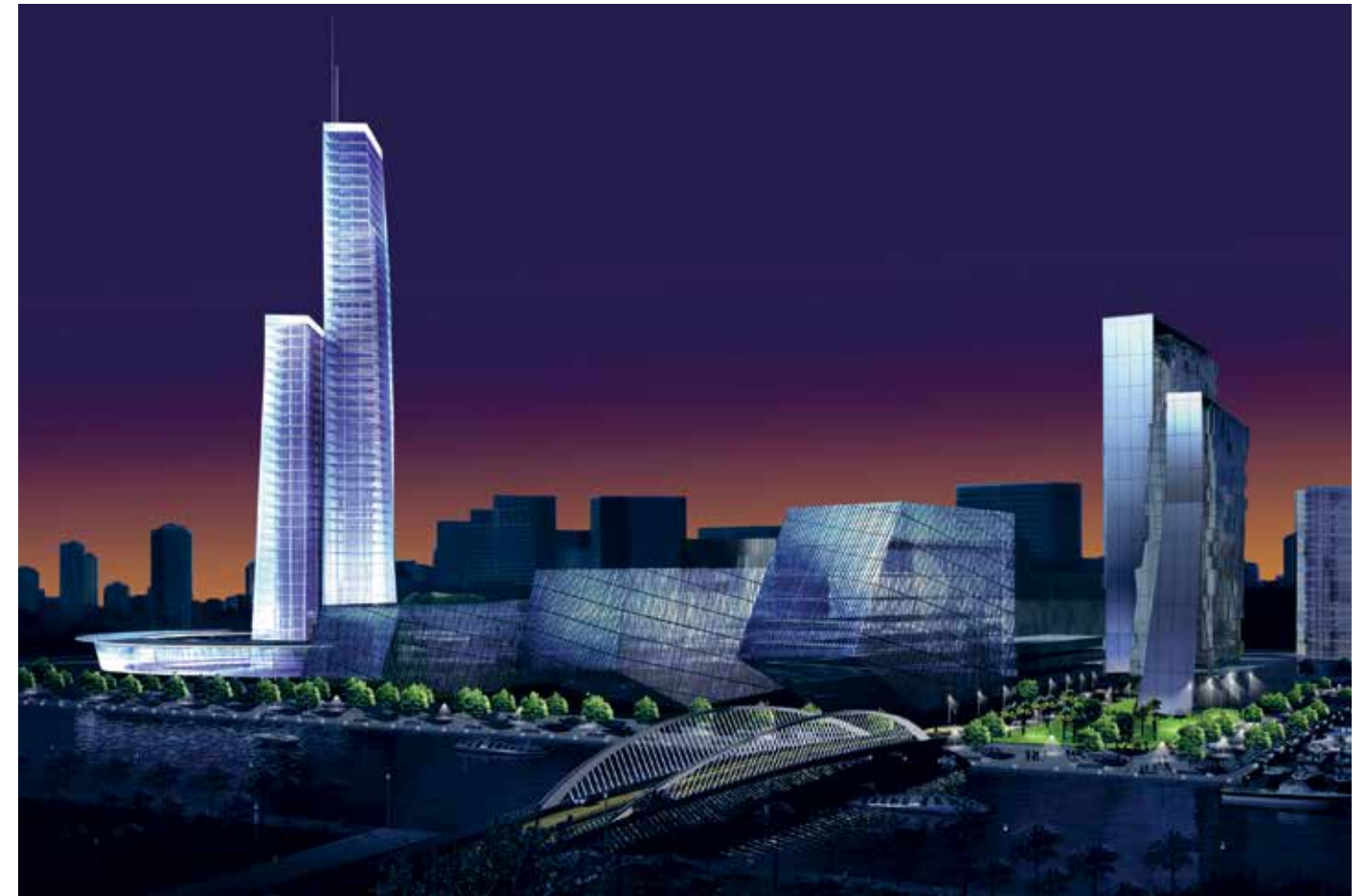
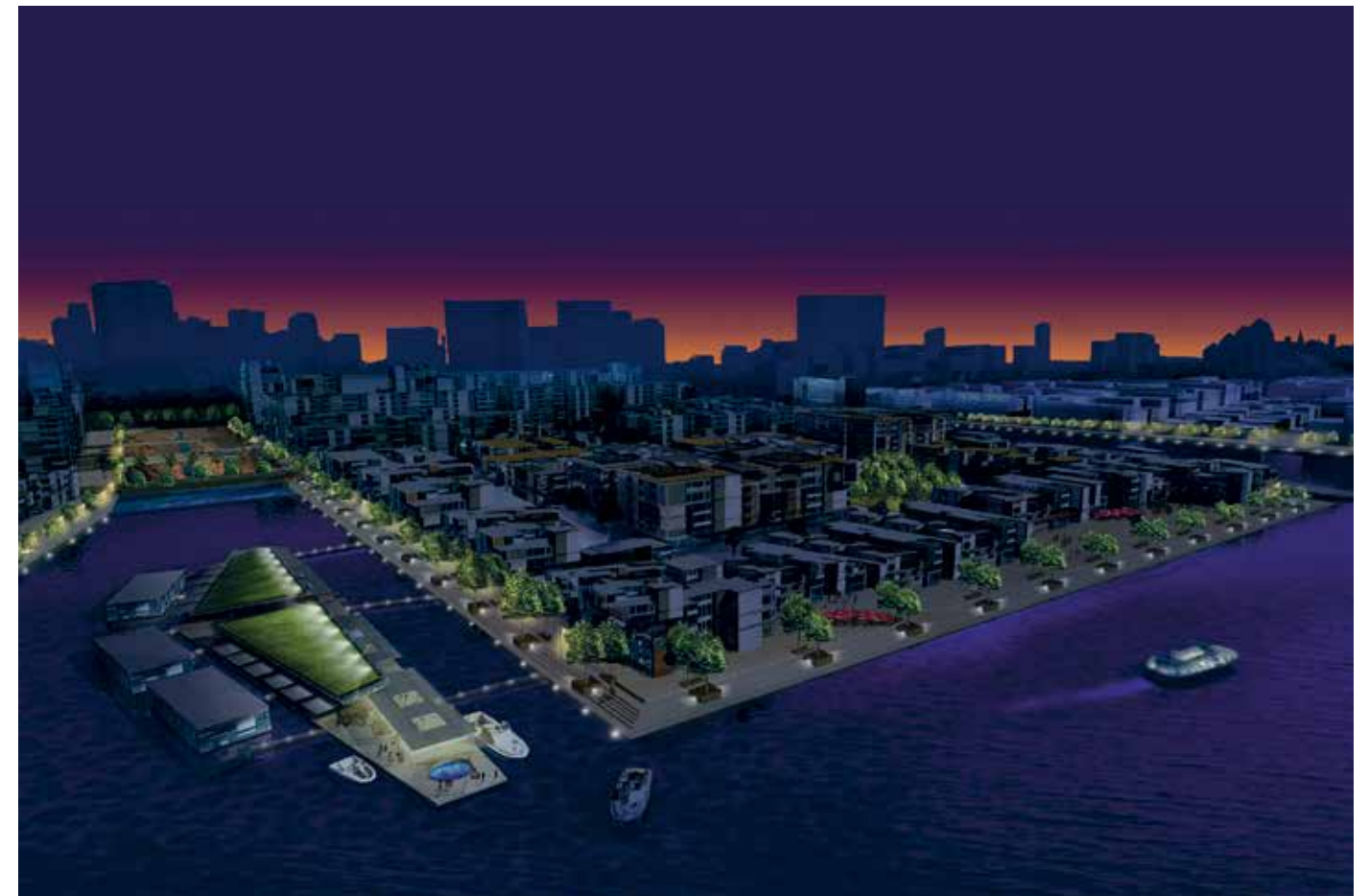




perspective rendering of the wadi



rendering of central business district



perspective rendering of retail precinct

The urban masterplan for the Dubai Waterfront Phase 2 was inspired by the interaction of water with this arid landscape. Our main points of focus for the lighting design were divided into three categories: open spaces (including the oasis and greenway), streetscapes (automotive and pedestrian path lighting), and iconic and infrastructural buildings, with the mosque as the central focal point for the entire area. Color temperature of the lighting was crucial to enhancing the areas of vehicular and pedestrian activity. Water taxi stations, canals, marinas, jetties, wadis, and individual water features were highlighted to provide visual termini from a variety of perspectives within the site.

CLIENT	Nakheel Properties
ARCHITECT	FXCollaborative
YEAR	2007
LOCATION	Dubai
VISUALS	AWA

PHASE 2 MASTERPLAN